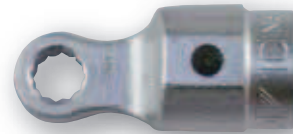
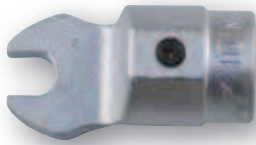




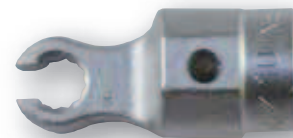
SPANNER END FITTINGS FOR NORBAR 16mm TORQUE HANDLES

On this page you will find our standard range of end fittings.
For other sizes, see page 35 & 36.



2	OPEN ENDS METRIC	2	OPEN ENDS IMPERIAL
29841	7mm	29701	¼"
29842	8mm	29702	⅝"
29843	9mm	29703	⅜"
29844	10mm	29704	7/16"
29845	11mm	29705	½"
29846	12mm	29706	9/16"
29847	13mm	29707	5/8"
29848	14mm	29708	11/16"
29849	15mm	29709	¾"
29850	16mm	29710	13/16"
29851	17mm	29711	7/8"
29876	18mm	29712	15/16"
29877	19mm	29713	1"
29852	20mm	29714	1 1/16"
29853	21mm	29715	1 1/8"
29854	22mm	29716	1 3/16"
29855	23mm	29717	1 ¼"
29856	24mm	29718	1 5/16"
29857	25mm		
29858	26mm		
29878	27mm		
29860	29mm		
29861	30mm		
29863	32mm		

2	RING ENDS METRIC	2	RING ENDS IMPERIAL
29881	7mm	29726	¼"
29882	8mm	29727	⅝"
29883	9mm	29728	⅜"
29884	10mm	29729	7/16"
29885	11mm	29730	½"
29886	12mm	29731	9/16"
29887	13mm	29732	5/8"
29888	14mm	29733	11/16"
29889	15mm	29734	¾"
29890	16mm	29735	13/16"
29891	17mm	29736	7/8"
29913	18mm	29737	15/16"
29914	19mm	29738	1"
29892	20mm	29739	1 1/16"
29893	21mm		
29894	22mm		
29895	23mm		
29896	24mm		
29915	27mm		



2	FLARE ENDS METRIC
29921	7mm
29922	8mm
29923	9mm
29924	10mm
29925	11mm
29926	12mm
29927	13mm
29928	14mm
29929	15mm
29930	16mm
29931	17mm
29953	18mm
29954	19mm
29932	20mm
29933	21mm
29934	22mm
29935	23mm
29936	24mm
29955	27mm